

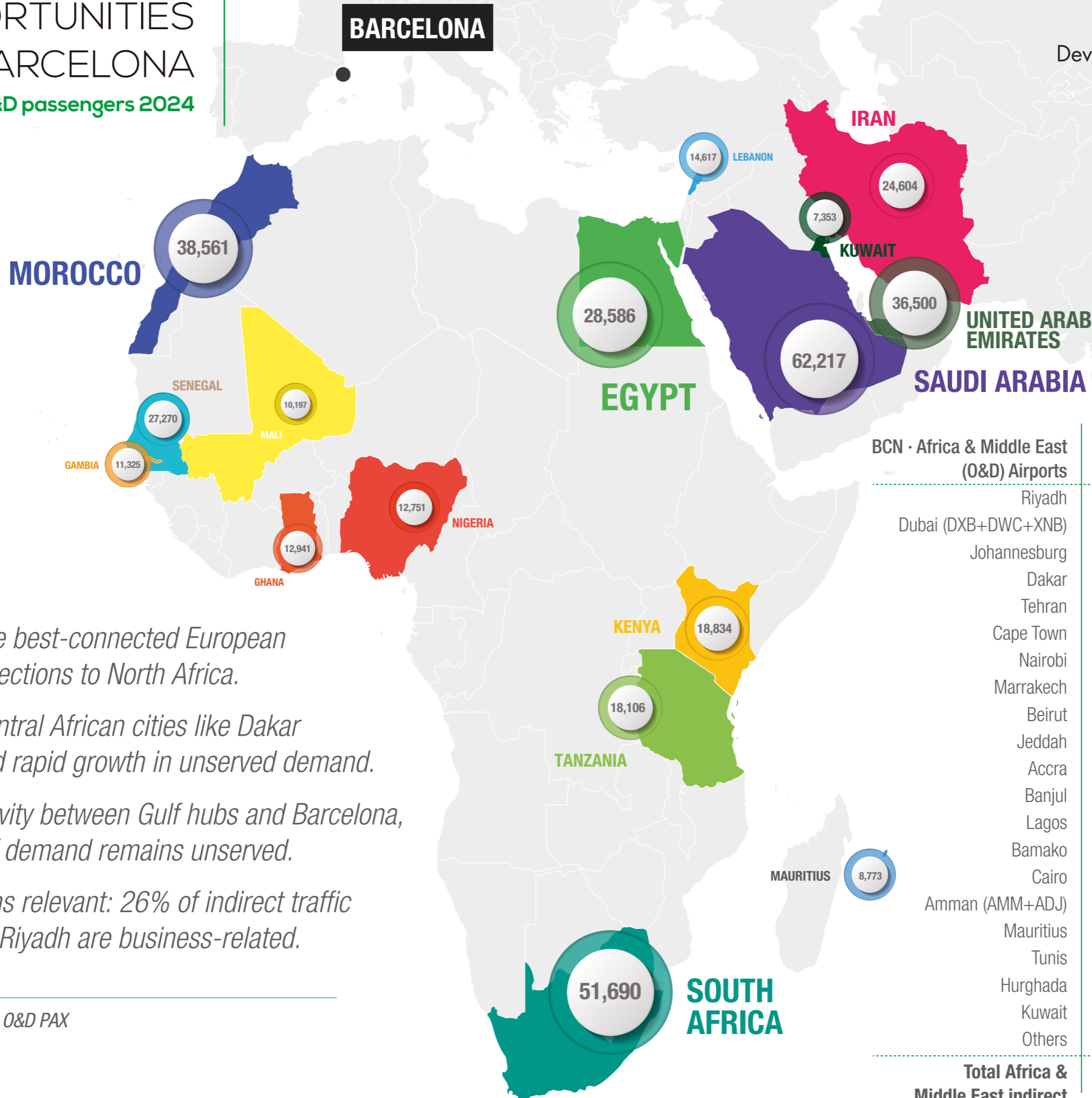
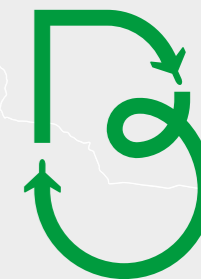
Africa & Middle East

ROUTES OPPORTUNITIES FROM BARCELONA

Unserved - Indirect O&D passengers 2024

Barcelona Air Route

Development Committee



- Barcelona is one of the best-connected European cities in terms of connections to North Africa.
- In 2024, West and Central African cities like Dakar and Accra experienced rapid growth in unserved demand.
- Despite good connectivity between Gulf hubs and Barcelona, a significant portion of demand remains unserved.
- Business travel remains relevant: 26% of indirect traffic to Kuwait and 23% to Riyadh are business-related.

BCN · Africa & Middle East (O&D) Airports	Indirect PAX 2024	% Business* 2024	% Var. 23/24
Riyadh	34,024	23%	18%
Dubai (DXB+DWC+XNB)	28,387	9%	0%
Johannesburg	27,006	16%	-13%
Dakar	26,980	1%	74%
Tehran	20,898	10%	24%
Cape Town	20,406	11%	-4%
Nairobi	17,900	8%	-6%
Marrakech	14,853	5%	1%
Beirut	14,617	10%	16%
Jeddah	13,425	12%	25%
Accra	12,935	7%	5%
Banjul	11,325	1%	-9%
Lagos	10,979	6%	-5%
Bamako	10,197	1%	-3%
Cairo	9,773	11%	-28%
Amman (AMM+ADJ)	9,761	6%	-14%
Mauritius	8,734	9%	3%
Tunis	8,179	14%	-9%
Hurghada	7,929	1%	-13%
Kuwait	7,353	26%	-53%
Others	170,558		
Total Africa & Middle East indirect	508,226		

Source: MIDT (Sabre.inc) two-ways O&D PAX
 (*) First & Business class